



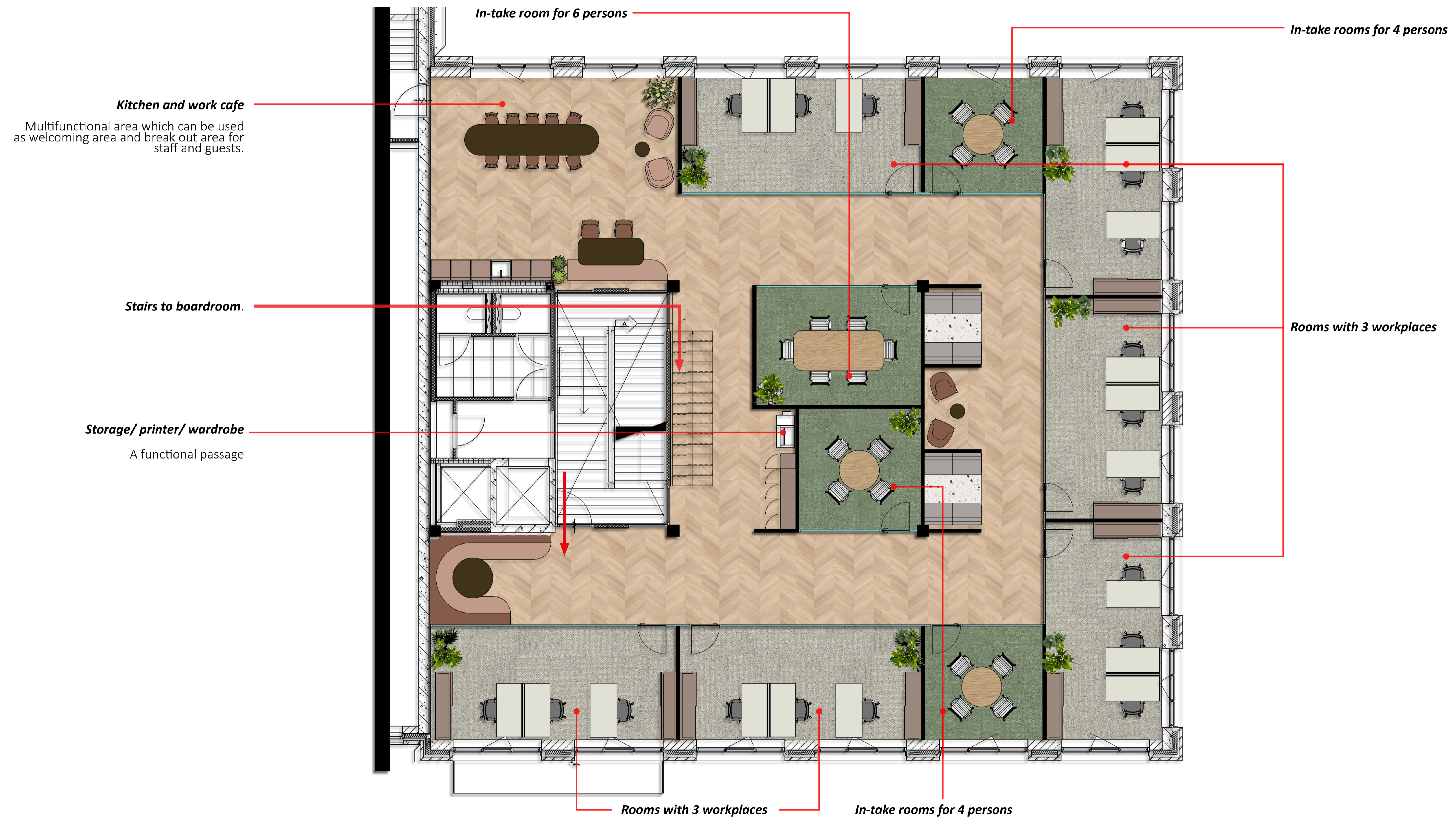
Design you can **feel.**

Test-fit with mezzanine

tétris x  JLL

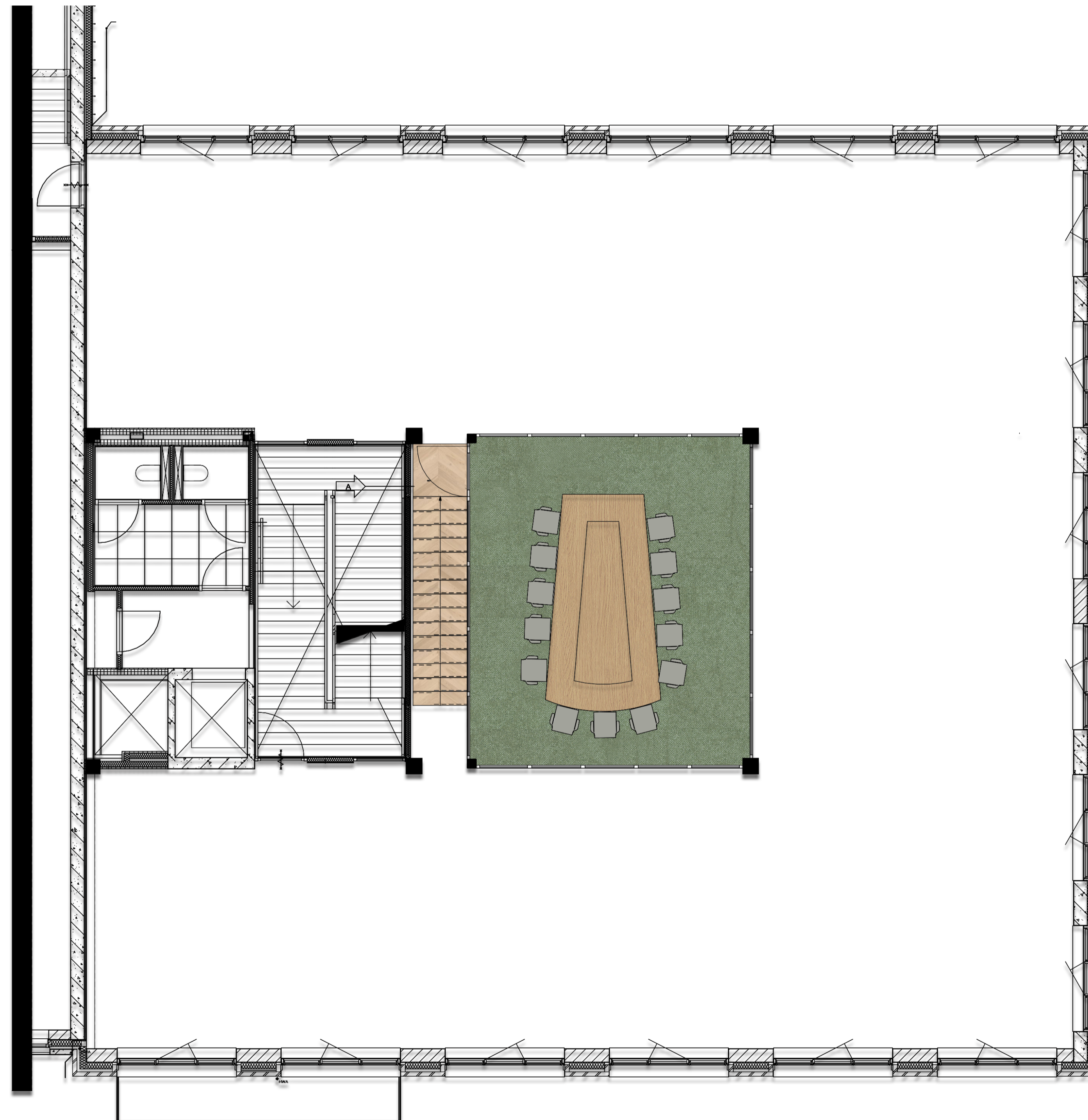


# Test-fit with mezzanine



Test-fit with mezzanine

tétris x  JLL

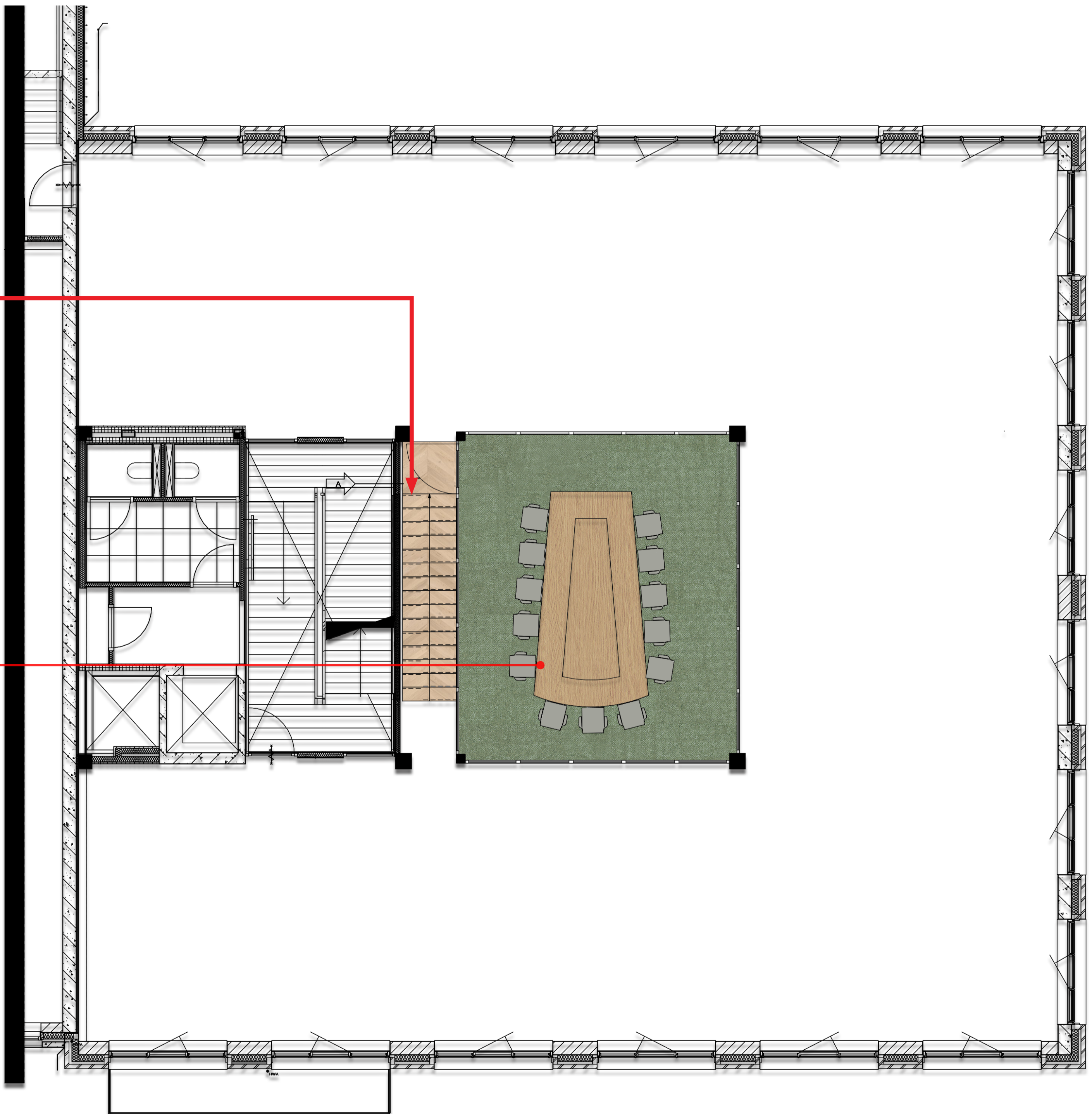


# Test-fit with mezzanine



**Extention on mezzanine**  
Enter the stairs on entrance side to the large meeting room.

**Boardroom 13-15 persons**





- 
- 6 rooms with 3 workplaces
  - 1 intake room for 6 people
  - 3 intake rooms for 4 people
  - 1 large boardroom for 13-15 people
  - Kitchen/large pantry for lunch/drinks
  - Small reception area (no official reception)
  - Small archive/storage room



## **Contact.**

Business Development Manager – Tom Mous  
[tmous@tetris-db.com](mailto:tmous@tetris-db.com)

Creative Lead – Nadine Bek  
[nbek@tetris-db.com](mailto:nbek@tetris-db.com)